



农业之心

Heart of agriculture

智能水肥一体化系统的领导者
Leader of intelligent water and
fertilizer integration system

山东圣大节水科技有限公司



山东圣大节水科技有限公司

SHANDONG SHENG DA WATER-SAVING IRRIGATION TECHNOLOGY CO., LTD

地址 (Add) 山东·寿光市晨鸣工业园文昌路中段 电话 (Tel) / 0536-5289990
邮编 (Cod) / 262700 传真 (Fax) / 0536-5786988 E-mail / sgdsjieshui@163.com

免费热线:

400-618-9919

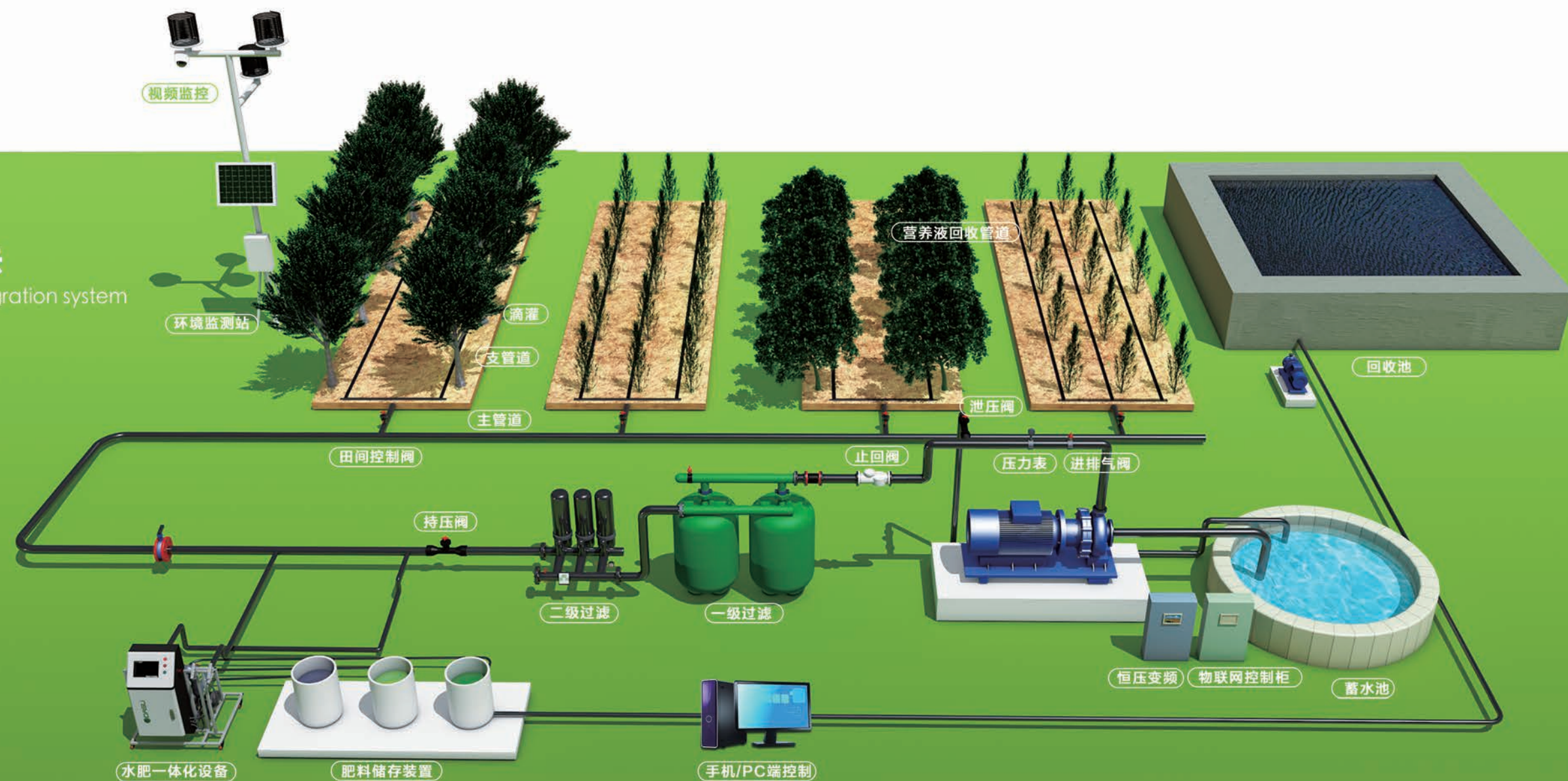


*所有参数均经过仔细核对，如有印刷错误，本公司保留最终解释权。

*广告宣传品所列的文字、数据如有变更，恕不另行通知，产品图片与实物如有差别，请以实物为准。

水肥一体化系统展示

Display of water and fertilizer integration system



让品质去说话

Speak with quality

圣大农业节水灌溉产品，适用于各种土壤，各个季节，各种生态环境。从应用场景出发，从土地需求出发，从使用者的习惯出发，致力于为广大用户提供好用、实用、耐用的水肥一体化系统，带来便捷、智能、高效的农业工作体验。

Shengda agricultural water-saving irrigation products, suitable for all kinds of soil, various seasons, various ecological environments. Starting from application situation, land requirement and habits of users, we are committed to providing useful, practical and durable water and fertilizer integration system for vast number of users and bringing convenient, intelligent and efficient agricultural work experience.



圣大产品 Products of Shengda

灌溉首部产品

First series of products in irrigation

- | | |
|---------------|--|
| 1. 水肥一体机系列产品 | 1. Series products of water and fertilizer all-in-one machines |
| 2. 施肥设备 | 2. Fertilization equipment |
| 3. 过滤器系列产品 | 3. Series products of filters |
| 4. 灌溉控制阀门系列产品 | 4. Series products of irrigation control valves |

田间管网产品

Pipe network products in the field

- | | |
|--------------------|--|
| 1. HDPE 管材及热熔管件系列 | 1. HDPE pipe and hot melt pipe fittings series |
| 2. LDPE 管材及PP快接件系列 | 2. LDPE Pipe and PP fast connector series |
| 3. PVC 管材及管件系列 | 3. PVC pipe and pipe fittings series |
| 4. PE 输水软管 | 4. PE water transportation soft hose |

末端灌溉产品

End irrigation products

- | | |
|------------|--|
| 1. 滴灌系列产品 | 1. Drip irrigation series products |
| 2. 微喷及微喷配件 | 2. Micro-spraying and micro-spraying accessories |
| 3. 喷灌及喷灌配件 | 3. Spray irrigation and spray irrigation accessories |
| 4. 专用工具 | 4. Special tools |

智慧农业物联网系统

Intelligent agriculture Internet of Things system

- | | |
|-----------------|---|
| 1. 智慧农业云平台 | 1. Intelligent agriculture cloud platform |
| 2. 智慧灌溉及水肥一体化系统 | 2. Intelligent irrigation and water and fertilizer integration system |
| 3. 智慧温室系统 | 3. Intelligent greenhouse system |
| 4. 智慧装备 | 4. Intelligent equipment |

First series of products in irrigation 灌溉首部产品

① 水肥一体机系列产品介绍

Introduction of series products of water and fertilizer all-in-one machines

运用水肥一体化技术，集成灌溉控制与施肥，配肥控制，可实现本地化操作，远程操作，数据采集监测，智能预警，自动化任务，以及外部设备联动控制，可通过私有通讯协议接入私有云，实现大数据的应用，进行智能决策。

水肥一体机的应用范围：

大田种植，温室种植，果树种植，无土栽培，育苗

水肥一体机的组成部分：

1.外观及外部构架2.动力系统3.管道系统4.电器配置5.控制程序，五部分组成。

圣大节水可根据用户园区的实际情况与使用要求，提供科学合理的水肥一体机配置方案，无缝对接园区现有的灌溉系统。

Using water and fertilizer integration technology to integrate irrigation control and fertilization and fertilizer distribution control, and realize localization operation, remote operation, data acquisition and monitoring, intelligent early warning, automation tasks as well as external equipment linkage control. Accessing private cloud through private communication protocol to realize the application of big data and make intelligent decision.

Application scale of water and fertilizer all-in-one machine:

Big field planting, greenhouse planting, fruit tree planting, soilless culture, grow seedlings.

Component of water and fertilizer all-in-one machine:

It is composed of five parts: 1. Appearance and external framework; 2. Power system; 3. Pipeline system; 4. Electrical configuration; 5. Control program.

Shengda Water Saving can provide scientific and reasonable water and fertilizer all-in-one machine configuration solution and seamlessly connect with the existing irrigation system of the park according to the actual situations and usage requirements of the users' parks.



肥与灌溉结合 Integration of fertilizer and irrigation



可控管道系统 Controllable pipeline system



养分定时定量 Regular and quantitative nutrients

简易型水肥一体机:

Simple water and fertilizer all-in-one machine:



水肥一体机
SD-JYX-A

适用于小面积种植，温室栽培，可定时定量进行施肥控制，能够达到简单的自动化操作。

It is applicable to small-area planting and greenhouse planting. It can control fertilization regularly and quantitatively to realize simple automated operation.

● 技术参数: Technical parameters:

- 尺寸: 40*60*125cm
- 工作电压: 220V/380 (可定制)
- 功率: 0.75kw
- 扬程: 45m
- 流量: 45L/min
- 进/出水口: DN25
- 吸肥通道: 1路
- 吸肥量: 160L/H/单路通道 (支持流量扩展)
- 灌溉区域控制方式: 手动阀门控制

Size: 40*60*125cm
Operating voltage: 220V/380 (customizable)
Power: 0.75kw
Water-lift: 45m
Quantity of flow: 45L/min
Water inlet and outlet: DN25
Number of fertilizer suction channel: 1
Fertilizer suction amount: 160L/H/ single channel (flow extension supported)
Irrigation area and control mode: manual valve control

● 功能特点: Functions and characteristics:

- 旁路式连接，不影响原有主管道；
- 旋钮式定时开关，操作简单；
- 配带200L耐腐蚀肥料桶；
- 自带小型过滤器，可过滤肥液中的残渣；
- 手动旋钮式流量调节阀，吸肥量调整更加精确，方便；
- 文丘里注肥器，吸肥更加稳定；
- 可控制水源供水设备的开启/关闭。

Its bypass connection does not influence the original main pipeline;
Its knob timing switch is easy to operate;
It is equipped with an anti-corrosion fertilizer bucket of 200L;
It is equipped with small filter to filter the residue in fertilizer solution;
It is equipped with manual knob flow adjustment valve to make the adjustment of fertilizer suction amount more accurate and convenient;
It adopts Venturi fertilizer injector to make fertilizer suction more stable;
The opening and closing of water supply equipment is controllable.

水肥一体机 SD-JYX-B



应用范围广泛，温室种植，大田种植，拥有3个吸肥通道可进行3种肥料的配比施肥控制，可进行水泵和肥泵的定时控制，操作简单实用。

It has vast range of application, including greenhouse planting and big field planting. It has three fertilizer suction channels, which can carry out the proportional fertilization control of three kinds of fertilizers as well as timing control of water pump and fertilizer pump. The operation is simple and practical.

技术参数: Technical Parameters:

- 尺寸: 50*55*125cm
- 工作电压: 220V/380 (可定制)
- 功率: 0.75kw
- 扬程: 43m
- 流量: 4.2m³/h
- 吸肥通道: 3路
- 吸肥量: 160L/H/单路通道 (支持流量扩展)
- 灌溉区域控制方式: 手动阀门控制

Size: 50*55*125cm
Operating voltage: 220V/380 (customizable)
Power: 0.75kw
Water-lift: 43m
Quantity of flow: 4.2m³/h
Number of fertilizer suction channel: 3
Fertilizer suction amount: 160L/H/ single channel (flow extension supported)
Irrigation area and control mode: manual valve control

功能特点: Functions and characteristics:

- 旁路式连接，不影响原有主管道；
- 双定时开关控制，一天可同时设置14个阶段的肥泵和水泵的开启和关闭；
- 手动/自动随时切换；
- 金属涂塑外壳防潮不生锈；
- 三通吸肥，施肥管理更科学，避免肥料混合产生反应，肥料配比任意掌控；
- 手动旋钮式流量调节阀，吸肥量调节更加精确和方便；
- 文丘里注肥器，吸肥更加稳定；
- 可控制水源供水设备的开启/关闭。

Its bypass connection does not influence the original main pipeline;
It has double timing switch control, which can set up the opening and closing of fertilizer pumps and water pumps of 14 stages in one day
Manual/automatic mode can be switched at any time;
The metal plastic-coating shell is moistureproof and resistant to rust.
It has three channels to suck fertilizers which can make fertilization management more scientific, avoid the reaction of fertilizer mixture and control the proportion of fertilizers at will.
It is equipped with manual knob flow adjustment valve to make the adjustment of fertilizer suction amount more accurate and convenient;
It adopts Venturi fertilizer injector to make fertilizer suction more stable;
The opening and closing of water supply equipment is controllable.



双效过滤 水肥一体机 SD-SGL-A

Double-effect filter
water and fertilizer
all-in-one machine



双过滤水肥一体机，将离心过滤和网式过滤器与施肥动力系统相结合，适用于井水作为水源的灌溉系统，可管理中小型的种植园区。

Combining the centrifugal filter and mesh filter with fertilization power system, the double-effect filter water and fertilizer all-in-one machine is applicable to irrigation systems with well water as the water source. It can manage medium and small planting parks.

技术参数: Technical Parameters:

- 尺寸: 120*85*160cm
- 工作电压: 220V
- 功率: 0.75kw
- 扬程: 45m
- 流量: 45L/min
- 进出水口: DN80
- 吸肥通道: 2路
- 吸肥量: 160L/H/单路通道 (支持流量扩展)
- 灌溉区域控制方式: 手动阀门控制

Size: 120*85*160cm
Operating voltage: 220V
Power: 0.75kw
Water-lift: 45m
Quantity of flow: 45L/min
Water inlet and outlet: DN80
Number of fertilizer suction channel: 2
Fertilizer suction amount: 160L/H/ single channel (flow extension supported)
Irrigation area and control mode: manual valve control

功能特点: Functions and characteristics:

- 主路式连接；
- 自带离心过滤与双网式过滤器，不用外加过滤设备就能够把水和肥料中的杂质处理干净，有效防止滴管管道堵塞；
- 双吸肥通道，每路吸肥通道吸肥量手动可调整；
- 可计量单路施肥量和总体施肥量；
- 大容量混肥腔，保证肥料充分混合；
- 免拆卸清洗，通过蝶阀控制，排污方便；
- 有机玻璃观察口，随时查看泥沙罐中的情况。

Main road connection;
It has centrifugal filter and double-mesh filter, and the impurities in water and fertilizer can be cleaned up without additional filtering equipment. It can effectively prevent the dropper pipeline from blocking;
It has double fertilizer suction channels, and the fertilizer suction amount of each channel can be adjusted manually;
It can calculate the fertilization amount of a single channel and the total fertilization amount;
It has high-capacity fertilizer mixture chamber to ensure the completely mixture of the fertilizers;
It can be cleaned without disassembly, is controlled by butterfly valve and is convenient for sewage discharge;
It has plexiglass observation windows to examine the conditions in the desilting tank at any time.

智能型水肥一体机:

Intelligent water and fertilizer all-in-one machine

水肥一体机
SD-ZNX-B

水肥一体化控制系统基础版

Basic version of water and fertilizer integration control system.



适用于中小型园区，可控制10个灌溉区域，7寸触摸屏，中文人机交互界面，3个吸肥通道，可定时定量管理每个区域的灌溉与施肥，可通过手机APP/PC端进行远程操作，可接入物联网云平台实现在线监控与数据决策。

It is applicable to small and medium parks and can control 10 irrigation areas. It has a touch screen of 7 inches and a human-machine interactive interface in Chinese. Three fertilizer suction channels can manage the irrigation and fertilization of each area regularly and quantitatively. It can be operated remotely through mobile phone APP/PC terminal, and can realize online monitoring and digital decision-making by accessing to Internet of Things cloud platform.

技术参数: Technical Parameters:

- 尺寸: 60*70*140cm
- 工作电压: 220V/380 (可定制)
- 功率: 1.1kw
- 扬程: 63-84m
- 流量: 2m³/h
- 吸肥通道: 3路
- 吸肥量: 160L/H/单路通道 (支持流量扩展)
- 灌溉区域控制方式: 远程电磁阀

Technical parameters:

Size: 60*70*140cm

Operating voltage: 220V/380 (customizable)

Power: 1.1kw

Water-lift: 63-84m

Quantity of flow: 2m³/h

Number of fertilizer suction channel: 3

Fertilizer suction amount: 160L/H/ single channel (flow extension supported)

Irrigation area and control mode: remote solenoid valve

功能特点: Functions and characteristics:

- 旁路式连接，不影响原有主管道；
- (7寸) 液晶高清触摸屏，中文操作系统，简单易学，好操作；
- 系统可依据设定的灌溉施肥程序自动执行轮灌任务，无需人工操作，定时定量
- 省人工，达到精准施肥；
- 可控制灌溉区域电磁阀，10个；
- 3路吸肥通道，每路吸肥通道装配流量计，精准显示瞬时施肥流量；
- 手动旋钮式流量调节阀可以根据实际需要调整施肥流量，更加精确，方便；
- 高精度文丘里注肥器，吸肥更加稳定；
- 化工级pvc混肥管道，强耐腐蚀，抗老化，不变形，寿命长；
- 支持手机APP/PC端远程操作；

Its bypass connection does not influence the original main pipeline;

It has a (7-inch) LCD HD touch screen and Chinese operation system, which is easy to learn and operate;

Its system can automatically execute rotation irrigation tasks regularly and quantitatively according to the set irrigation and fertilization program without manual operation, which saves labor and can realize precise fertilization;

It has ten solenoid valves in controllable irrigation areas;

It has three fertilizer suction channels, each of which is equipped with a flowmeter to precisely show the instantaneous fertilization flow;

It is equipped with manual knob flow adjustment valve to make the adjustment of fertilizer suction amount more accurate and convenient;

It adopts Venturi fertilizer injector of high precision to make fertilizer suction more stable;

It has a chemical PVC fertilizer mixture channel, which is strongly anti-corrosion and anti-aging, and does not deform and has long service life;

It supports remote operation of mobile phone APP/PC terminal;

It supports function extension and customization;

It can add various sensing equipment and connect with Internet of Things.

应用范围: 温室、大棚、大田、果园

Application scale: greenhouse, big field, orchard. Site construction drawing:



现场施工图: Site construction drawing:



水肥一体机 SD-ZNX-E

水肥一体化控制系统标准版

Standard version of water and fertilizer integration control system



适用于大中型园区的作物种植管理，可通过EC/PH进行实时监测，自动配肥，10寸触屏控制，可通过手机APP/PC端进行远程操作，可接入物联网云平台实现在线监控与数据决策。

It is applicable to crop planting management of medium and large parks and can carry out real-time monitoring and automatic fertilizer distribution through EC/PH. It is controlled by a touch screen of 10 inches, can be operated remotely through mobile phone APP/PC terminal, and can realize online monitoring and digital decision-making by accessing to Internet of Things cloud platform.

技术参数: Technical parameters:

- 尺寸: 80*90*140cm
- 工作电压: 220V/380 (可定制)
- 功率: 1.1kw
- 扬程: 63-84m
- 流量: 2m³/h
- 吸肥通道: 3路
- 加药通道: 1路
- 吸肥量: 160L/H/单路通道 (支持流量扩展)
- 灌溉区域控制方式: 远程电磁阀

Size: 80*90*140cm
Operating voltage: 220V/380 (customizable)
Power: 1.1kw
Water-lift: 63-84m
Quantity of flow: 2m³/h
Number of fertilizer suction channel: 3
Number of pesticide adding channel: 1
Fertilizer suction amount: 160L/H/ single channel (flow extension supported)
Irrigation area and control mode: remote solenoid valve

功能特点: Functions and characteristics:

- 旁路式连接，不影响原有主管道；
- (10寸)液晶高清触摸屏，中文操作系统，简单易学，好操作；
- 系统可依据设定的灌溉施肥程序自动执行轮灌任务，无需人工操作，定时定量省人工，达到精准施肥；
- 可控制灌溉区域电磁阀门，20个；
- EC (电导率) / PH (酸碱度) 自动检测，利用PID运算精准配肥；
- 1路加药通道含手动控制阀门；
- 手动旋钮式流量调节阀，可以根据实际需要调整吸肥量调整更加精确，方便；
- 高精度文丘里注肥器，吸肥更加稳定；
- 化工级pvc混肥管道，强耐腐蚀，抗老化，不变形，寿命长；
- 支持手机APP/PC端远程操作；
- 支持功能扩展和订制；
- 可增加各项 (环境因素，土壤墒情) 等传感器，实现与物联网对接，并可通过传感数据控制灌溉程序运行，达到智能灌溉施肥状态。

Its bypass connection does not influence the original main pipeline;
It has a (10-inch) LCD HD touch screen and Chinese operation system, which is easy to learn and operate;
Its system can automatically execute rotation irrigation tasks regularly and quantitatively according to the set irrigation and fertilization program without manual operation, which saves labor and can realize precise fertilization;
It has 20 solenoid valves in controllable irrigation areas;
It has EC (electrical conductivity) / PH (pondus hydrogenii) automatic detection, and can use PID calculation to precisely distribute fertilizers;
The pesticide adding channel has manual control valve;
It is equipped with manual knob flow adjustment valve to make the adjustment of fertilizer suction amount more accurate and convenient;
It adopts Venturi fertilizer injector of high precision to make fertilizer suction more stable;
It has a chemical PVC fertilizer mixture channel, which is strongly anti-corrosion and anti-aging, and does not deform and has long service life;
It supports remote operation of mobile phone APP/PC terminal;
It supports function extension and customization;
It can add various sensors (environmental factors, soil moisture content) and connect with Internet of Things. It can also achieve intelligent irrigation fertilization by using sensing data to control the operation of irrigation progra.

产品亮点: Product highlights:

多个专业细节体现非凡的技术前沿

The extraordinary technical leading edge is shown through several professional details



土壤湿度传感器

由不锈钢探针和防水探头构成，可长期埋设于土壤和堤坝内使用，对表层和深层土壤进行墒情的定点监测和在线测量。

Soil moisture sensor

It is composed of stainless steel probe and water-proof probe. It can be buried in soil and dam for a long time. It can carry out fixed-point monitoring and on-line measurement of moisture content of soil in surface and deep layers.



光照辐射传感器

配合不同的量程，线性度好 防水性能好、可靠性高、结构美观、安装使用方便、抗干扰能力强。

Illumination radiation sensor

With different ranges, it has good linearity, good water-proof performance, high reliability, beautiful structure, convenient installation and use, and strong anti-interference ability.



智能端口

可连接互联网，直接用手机APP或者电脑控制，也可连接多台设备，同时智能控制预留物联网接口，可增加多个传感器设备。

Intelligent port

It can be connected to the Internet, directly controlled by mobile phone APP or computer, and can also be connected to multiple devices. In the meantime, intelligent control reserves Internet of Things interface, which can add multiple sensor devices.



20路电磁阀

在管道基础设施允许的范围之内，可同时控制灌溉面积100-500亩，智能化程度更高。

Solenoid valves of 20 channels

Within the permissible scope of pipeline infrastructure, it can control irrigation area in the range of 100-500 mu simultaneously. It has a higher degree of intelligence.



水肥一体机 SD-ZNX-F

水肥一体化作物 管理系统专业版

Professional version of water
and fertilizer integration crop
management system



适用范围广，可满足全球现有的大部分灌溉系统方案，适用于精准种植和大规模灌溉区管理，可采用多种阀门控制方式，多线，总线解码，无线RTU等。内置水肥一体化作物管理系统专业版，实现多任务计划，灌区自定义分组管理，施肥配方设定，精准配肥控制，反冲过滤控制，外部设备联动，智能决策，工作记录与监测数据查询，手机端与PC端远程监控等，完全满足种植专家和高级农艺师对作物管理的使用要求和思路。真正做到科学管理种植的目的。可接入物联网云平台进行数据应用与监控管理。

It has a wide range of application and can meet most of the existing irrigation system schemes in the world. It is applicable to precision planting and large-scale irrigation area management. It can adopt a variety of valve control modes, multi-wire, bus decoding, wireless RTU, etc. It has a built-in professional version of water and fertilizer integration crop management system to realize multi-task planning, custom grouping management of irrigation area, fertilization formula setting, precise fertilization control, backwash filter control, external equipment linkage, intelligent decision-making, inquiry of work record and monitoring data, remote monitoring of mobile phone and PC terminal, etc. It fully meets the usage requirements and ideas of planting experts and senior agronomists to crop management, and truly achieves the purpose of scientifically managing crop cultivation. It can access the Internet of Things cloud platform for data application and monitoring management.

技术参数: Technical parameters:

- 尺寸: 80*75*150cm
- 工作电压: 220/380V
- 电机功率: 1.5KW (选配)
- 吸肥通道: 4通道
- 吸肥量: 160L/H/单通道 (选配)
- 阀门控制方式:
 - 1.两线解码2.多线控制3.无线控制 (三选一)

Size: 80*75*150cm
Operating voltage: 220/380V
Motor power: 1.5KW (optional)
Number of fertilizer suction channel: 4
Fertilizer suction amount: 160L/H/ single channel (optional)
Valve control mode:
1. Dual-line decoding; 2. Multi-line control; 3. Wireless control (select one in three)

功能特点: Functions and characteristics:

- 操作体验: 10寸高清触摸屏, 中文人机交互界面, 一个主页面可掌握整个灌溉系统的运转情况;
- 安全性: 操控权限设置, 可自定义密码, 有效的防止长期设备自运行状态下外部干扰;
- 专家种植模式: 可编辑16条灌溉施肥程序, 可自定义8个施肥配方, 可制定10条预约任务计划。让你自主按照农艺专家的种植思维进行对作物的科学管理;
- 阀门管理系统: 可自定义不同灌区的阀门组合和轮灌顺序;
- 人性化设置: 可自定义灌区和灌溉程序的名称, 方便操作人员识别和调用;
- 田间阀门控制: 多线控制方式可控12个电磁阀门, 总线控制和无线控制方式可控64个电磁阀门, 最大扩展至128路电磁阀门;
- 智能控制: 在外部接入传感监测设备的情况下, 可根据外部检测结果触发设备动作指令;
- 精准控制: 可根据EC/PH和水肥比进行精准调节, 实时在线调节, 达到精准配肥, 精准控肥;
- 外部设备控制: 可对过滤设备进行自动冲洗控制, 可实现温室内部设备进行联动控制;
- 支持功能扩展和订制;
- 支持手机端和电脑端远程操作。

Operation experience: It has a (10-inch) HD touch screen and a human-machine interactive interface in Chinese. The operation condition of the whole irrigation system can be grasped through one homepage;
Security: passwords can be customized by controlling permission settings to effectively prevent the external interference in the long-term self-running state of equipment;
Expert planting mode: 16 irrigation and fertilization programs can be edited, 8 fertilization formulas can be customized, and 10 appointment task plans can be made. You can manage crops scientifically according to the agronomist's planting thinking.
Valve management system: valve combination and rotation irrigation sequence in different irrigation areas can be customized.
Humanized settings: the name of irrigation areas and irrigation programs can be customized to facilitate operator's identification and invocation.
Field valve control: multi-line control mode can control 12 solenoid valves, bus control and wireless control mode can control 64 solenoid valves, and can extend to 128 solenoid valves at most.
Intelligent control: in the case of external access to sensing monitoring equipment, the device action commands can be triggered according to the external detection results.
Precise control: It can carry out precise adjustment and real-time online adjustment according to EC/PH and water-fertilizer ratio to achieve precise fertilizer distribution and precise fertilizer control.
External equipment control: it can carry out automatic flush control to filter equipment and realize linkage control of internal equipment in greenhouse.
It supports function extension and customization;
It supports remote operation of mobile phone terminal and computer terminal;

应用范围: 温室、大棚、大田、果园

Application scale: greenhouse, big field, orchard.



现场施工图: Site construction drawing:



② 施肥设备 Fertilization equipment



过滤施肥器



文丘里施肥器



文丘里施肥器

Venturi fertilizer device

文丘里施肥器又称文丘里吸肥器，使用时将控制阀门关小，造成控制阀门前后有一定的压差，使水流经过安装文丘里施肥器的支管，利用水流通过文丘里管产生的真空吸力，将肥料溶液从敞口的肥料桶中均匀吸入管道系统进行施肥。文丘里施肥器具有造价低廉，使用方便，施肥浓度稳定，无须外加动力等特点，适用于独栋大棚或小型灌区等场合。

Venturi fertilizer device is also called Venturi fertilizer suction device. When in use, its control valve will be turned down, resulting in a certain pressure difference before and after the control valve to make the water flow through the branch pipe installed with Venturi fertilizer device. It uses the vacuum suction generated by the water flowed through the Venturi fertilizer device to evenly suck the fertilizer solution from the open fertilizer bucket into the pipe system for fertilization. Venturi fertilizer device has the characteristics of low cost, easy to use, stable fertilizer concentration, no additional power required, etc. It is applicable to single-roof greenhouse or small irrigation area.

产品优点: Product advantages

- 特点：操作简便，施肥均匀，肥料直接灌溉作物根部，提高肥效，省时、省力、定量，既可集中，也可分散施肥。
- 适用范围：主要用于蔬菜大棚、田间、果园的微喷、滴灌等微灌工程的灌溉。

Characteristics: it is simple to operate and fertilizes evenly. It can directly irrigate the fertilizers to roots of crops to improve fertilizer efficiency, save time, labor and determine quantity. It can fertilize either centrally or separately.

Applicable range: it is mainly used for irrigation of vegetable greenhouse, field, orchard micro-spraying, drip irrigation and other micro-irrigation projects.

比例施肥泵

Proportional fertilizer pump

比例施肥器由管路中水流驱动比例加肥泵工作，其唯一的动力就是水压，可直接安装在工艺水管线上，在水压的作用下，充分混合后的肥液被输送到下游管路中，且无论管路中水压及水量如何变化，吸入(投加)的肥液始终同进入比例加肥泵水的体积成比例，确保混合液的比例恒定。

比例泵产品特点：

- 水力驱动，无需电力；
- 精确的按比例添加药剂；
- 只要有水流通过就能一直按比例添加。

Proportional fertilizer device is operated by proportional fertilizer pump driven by water flow in pipeline, and its only power is water pressure. It can be directly installed in the process water pipeline. Under the action of water pressure, the fully mixed fertile solution is transported to the downstream pipeline, and no matter how the water pressure and water volume changes in the pipeline, the sucked (added) fertile solution is always proportional to the volume of the water entering the proportional fertilizer pump to ensure the constant proportion of the mixed liquid.

Product characteristics of proportional pump:

It is driven by water and does not need electricity;

Pesticides shall be added precisely in proportion;

Pesticides can be added in proportion continuously as long as there is water flowing through.

③ 过滤器系列产品介绍 Introduction of filter series products

离心过滤器

Centrifugal filter

离心式过滤器一般用于含沙量大的地下水和地表水的初级处理，常作为微滴灌系统的水质初级过滤使用。离心式过滤器的工作原理是由高速旋转水流产生的离心力，将砂粒和其他较重的杂质从水体中分离出来，它内部没有滤网，也没有可拆卸的部件，保养维护很方便。离心式过滤器底部的积沙室必须频繁冲洗，以防沉积的泥沙再次被带入系统。对有机物或比重小于水的杂质，离心式过滤器的分离效果很差，只有在一定的流量范围内，才能发挥出应有的净化水质的效果或搭配网式过滤器组合使用。离心过滤器的结构设计完全遵循水力学原理，分离效果好。

Centrifugal filters are generally used for primary treatment of groundwater and surface water with high sand content, and are often used in primary water quality filtration of micro-drip irrigation systems. Its working principle is to use the centrifugal force produced by high-speed rotating water flow to separate sand and other heavy impurities from the water body. It has no internal filter mesh or detachable parts, so its maintenance is very convenient. The sediment chamber at the bottom of the centrifugal filter must be flushed frequently to prevent deposited sediment from being brought into the system again. For organic matters or impurities whose specific gravity is less than water, the separation effect of centrifugal filter is very poor. Only in a certain flow range can the effect of purifying water be brought into full play or used in combination with screen filter. The structure design of centrifugal filter completely follows the principle of hydraulics and has good separation effect.



砂石过滤器

Sand filter

砂石过滤器在农业灌溉中常用于河水，湖水，池塘水等自然水质的初级过滤，利用一定厚度的滤层介质有效除去原水中有机物和无机物中的固体悬浮物，降低浊度，结构简单，技术成熟。过滤系统采用模块化技术，根据所需流量，占地等；多个过滤单元可供选择，灵活组合。

反洗系统简单，无须反洗泵，容易操作，使系统保持始终如一的过滤效果。自动过滤系统采用时间、压差等多种方式自动启动反冲洗，全自动运行，系统内各过滤单元依次进行反冲洗，反冲洗时不中断产水。

Sand filters are often used for primary filtration of natural water quality such as river water, lake water and pond water in agricultural irrigation. It uses filter medium of a certain thickness to effectively remove solid suspended matters in organics and inorganics in raw water, and reduces turbidity with simple structure and mature technology. The filtering system adopts modular technology. According to the required quantity of flow and land occupation, multiple filtering units can be selected and combined flexibly. Its backwashing system is simple, easy to operate and does not require backwashing pump. Thus the system can maintain a consistent filtering effect. The automatic filtering system uses time, pressure difference and other ways to automatically start backwashing. It adopts fully automatic operation, and each filter unit in the system is back washed in turn without interruption of water production.



自动反冲洗叠片过滤器

Automatic backwash laminated filter

自动反冲洗叠片过滤器，常用于农业灌溉中最后一级过滤，过滤精度高，内部滤芯是由一组两面带沟槽的盘片组成，沟槽棱边形成的交叉点，可以把水中悬浮和固体物截留，由于同时具有了表面拦截和深度凝聚的作用，大大提高了过滤效果。其特点具有高效反洗，连续运转，运行可靠，反洗过程每个单元逐一清洗，连续出水，工作效率高。可以根据用户使用需求，进行多过滤单元组合使用。自动控制系统操作简单，避免人工拆洗，可根据压差和时间进行自动反洗工作。

Automatic backwash laminated filters are often used in the last stage of filtration in agricultural irrigation with high filtering accuracy. Its inner filter element is composed of a group of discs with grooves on both sides. The intersection point formed by the groove edges can intercept suspended and solid substances in the water. Due to the functions of surface interception and deep condensation, the filtering effect is greatly improved. Its characteristics are high efficiency backwashing, continuous running, reliable operation, cleaning each unit of backwashing process one by one, continuous water release, and high work efficiency. Multi-filtering units can be used in combination according to users' demand. The automatic control system is simple to operate, avoids manual disassembly and cleaning, and can carry out backwash automatically according to pressure difference and time.



网式、叠片过滤器

Mesh and laminated filter



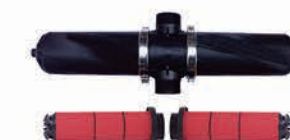
(全塑) 网式过滤器SD1



(全塑) 网式过滤器SD2



(全塑) 叠片过滤器SD1



(全塑) 叠片过滤器SD2

结构简单，安装方便，它是灌溉系统中应用最广泛的一种过滤器。由于工程塑料注塑而成，有很强的抗腐蚀性、耐磨性和机械性能；除泥沙效果好，适用于多种水源的过滤，除污能力强，过滤有保障；精确过滤，精度好选择；水头损失小，正常过滤的压力损失在0.1~0.5bar之间；便于实现反冲洗，反冲洗效率高，耗水率在0.5%以下；注塑件更容易更换和匹配，运行可靠维护简单。几乎不需要日常维护，不需要专用工具；使用寿命长；便于运输、安装、拆卸。

It is simple in structure, easy to install, and is the most widely used filter in irrigation system. It is made of engineering plastics and has strong corrosion resistance, wear resistance and mechanical properties; it has good sediment removal effect and is suitable for the filtration of various water sources with strong decontamination ability and guaranteed filtration; it can filter precisely and the precision is easy to choose; the loss of water head is small, and the pressure loss of normal filtration is between 0.1~0.5 bar; it is easy to achieve backwashing with high backwashing efficiency, and the water consumption rate of less than 0.5%; the injection parts are easier to replace and match, the operation is reliable and the maintenance is simple. It hardly needs routine maintenance or special tools; it has long service life, and is easy to transport, install and disassemble.

4 灌溉控制阀门系列产品介绍

Introduction of irrigation control valve series products

电磁阀

Solenoid valve

产品优点: Product advantages:

- 阀门具有弹簧和弹性部件
- 塑料球型阀体, 流体阻力小效率高
- 耐用性强, 抗化学腐蚀及气蚀
- 柔性平衡式隔膜和密封圈
- 关闭时密封严实滴水不漏
- 设计精良, 使用方便
- 可方便地进行在线检查

Valves have spring and elastic parts
Plastic ball valve body has low fluid resistance and high efficiency
Strong durability, chemical corrosion resistance and cavitation resistance
Flexible balanced diaphragm and sealing ring
When closed, it is tightly sealed and watertight.
It is well designed and easy to use.
It is convenient for online inspection.



电磁减压阀门

Solenoid decompression valve

产品优点: Product advantages:

- 减压功能与远程控制合二为一的控制阀
- 稳定出口压力, 平衡各区域流量, 能够有效防止管道压力波动及爆管的发生
- 远程控制可实现分区分时的浇灌
- 不管上游压力以及流量如何变化, 都能保证下游压力稳定。

A control valve combining pressure reduction function and remote control
It stabilizes the outlet pressure and balances the flow of each region, which can effectively prevent the fluctuation of pipeline pressure and the occurrence of pipe burst.
Remote control can realize time-sharing and partition irrigation
No matter how the upstream pressure and flow changes, the downstream pressure is stable.



解码控制器

Decoding controller

产品优点: Product advantages:

- 可通过两线制对电磁阀进行控制;
- 减少施工过程中的人工费用;
- 通过减少信号线的使用量降低材料成本;

It can control the solenoid valve through two-wire system;
Reduce the labor cost in the construction process;
Reduce material cost by reducing the usage of signal lines.



无线控制器RTU

Wireless controller RTU

产品优点: Product advantages:

- 采用太阳能电池板供电, 无线控制阀门开启关闭。
- 驱动方式: 脉冲式和常供电式。
- 通讯方式: LORO, RS485, GPRS

It adopts solar panels for power supply and controls the opening and closing of valves wirelessly.
Drive mode: pulse type and normal power supply type.
Communication mode: LORO, RS485, GPRS



Field pipe network system 田间管网系统

① HDPE管材及热熔管件系列 HDPE pipe and hot melt pipe fittings series

- 圣大聚乙烯PE管道系统之间采用电热熔方式连接，接头的强度高于管道本体强度。圣大聚乙烯PE管道可耐多种化学介质的腐蚀，土壤中存在的化学物质不会对管道造成任何降解作用。
- 聚乙烯是电的绝缘体，因此不会发生腐烂、生锈或电化学腐蚀现象；此外它也不会促进藻类、细菌或真菌生长。
- 圣大聚乙烯PE管道与钢管的耐磨性对比试验表明，HDPE管道的耐磨性为钢管的4倍。在泥浆输送领域，同钢管相比，HDPE管道具有更好的耐磨性，这意味着HDPE管道具有更长的使用寿命和更好的经济性。
- 圣大聚乙烯PE管道的低温脆化温度极低，可在-60~60℃温度范围内安全使用。冬季施工时，因材料抗冲击性好，不会发生管子脆裂。
- 圣大聚乙烯PE管道具有低的缺口敏感性、高的剪切强度和优异的抗刮痕能力，耐环境应力开裂性能也非常突出。

Shangda polyethylene PE pipeline system is connected by electrothermal melt, and the strength of the joint is higher than that of the pipeline body. Shangda polyethylene PE pipeline can withstand the corrosion of various chemical media, and the chemical substances in soil will not cause any degradation of pipeline. Polyethylene is an electrical insulator, so it will not decay, rust or electrochemically corrode; in addition, it will not promote the growth of algae, bacteria or fungi. The wear resistance test of Shangda polyethylene PE pipe and steel pipe shows that the wear resistance of HDPE pipe is four times that of steel pipe. In the field of slurry transportation, HDPE pipe has better wear resistance than steel pipe, which means that HDPE pipe has longer service life and better economy. The embrittlement temperature of Shangda polyethylene PE pipeline in low temperature is extremely low, and it can be safely used in the temperature range from -60℃ to 60℃. In winter construction, because of the good impact resistance of the materials, pipe embrittlement will not occur. Shangda polyethylene PE pipes have low notch sensitivity, high shear strength and excellent scratch resistance. The environmental stress cracking resistance is also very outstanding.



圣大聚乙烯PE管道含有2~2.5%的均匀分布的碳黑的聚乙烯管道能够在室外露天存放或使用50年，不会因遭受紫外线辐射而损害。圣大聚乙烯PE管道具有光滑的内表面，其曼宁系数为0.009。光滑的表现和非粘附特性保证HDPE管道具有较传统管材更高的输送能力，同时也降低了管路的压力损失和输水能耗。圣大聚乙烯PE管道具有多种施工技术，除了可以采用传统的开挖方式进行施工外，还可以采用多种全新的非开挖技术如顶管、定向钻孔、衬管、裂管等方式进行施工，这对于一些不允许开挖的场所，是唯一的选择，因此HDPE管道应用领域更为广泛。

Shangda polyethylene PE pipeline containing 2~2.5% uniformly distributed carbon black can be stored or used outdoors for 50 years without being damaged by ultraviolet radiation. Shengda polyethylene PE pipeline has smooth inner surface and its Manning coefficient is 0.009. Smooth performance and non-sticking characteristics ensure that HDPE pipeline has higher transport capacity than traditional pipes, it also reduces pipeline's pressure loss and energy consumption of transporting water. Shengda polyethylene PE pipeline has a variety of construction technologies. In addition to traditional excavation methods, it can also adopt various new trenchless technologies, such as pipe jacking, directional drilling, screened pipe, cracked pipe, etc. This is the only choice for some places where excavation is not allowed, so HDPE pipeline is used more widely.

PE热熔管件 PE hot melt pipe fittings



产品优点: Product advantages

- 圣大PE热熔管件采用热熔焊接，连接方便。
- 产品一次性注塑成型，结构美观，生产工艺精良。
- 产品耐腐蚀，耐酸碱，使用寿命长。
- 内壁结构设计符合水力学设计，内壁光滑，阻力小。
- 管道承受压力满足工作压力要求。

Shengda PE hot melt pipe fittings adopt sweat soldering, and are convenient to connect. The products are of one-time injection moulding, with beautiful structure and excellent production technology. The product is resistant to corrosion, acid and alkali, and has long service life. The design of inner wall structure is complied with hydraulics design. The inner wall is smooth with little resistance. The pressure of the pipeline satisfies the working pressure requirement.

② LDPE管材及PP快接件系列 LDPE Pipe and PP fast connector series



农业灌溉用PE管材，适用于管灌，微喷灌等主管道地下部分及支管道部分，连接方式可采用热熔连接和快接件链接的方式。
产品耐腐蚀，耐酸碱，使用寿命长，原材料配方科学合理。
内壁结构设计符合水力学设计，内壁光滑，阻力小，柔韧性好。

PE pipes used for agricultural irrigation are applicable to main pipeline underground parts and branch pipeline parts of pipe irrigation and micro-spraying irrigation, etc. Its connection modes can be hot melt connection and fast-connector connection.
The product is resistant to corrosion, acid and alkali, and has long service life. The formula of raw materials is scientific and reasonable.
The design of inner wall structure is complied with hydraulics design. The inner wall is smooth with little resistance and good flexibility.



PP快速连接件

PP fast connector



产品优点: Product advantages

适用于中低压灌溉管网的连接。
产品材质为PP原料，耐酸碱，使用寿命长。
内部结构设计合理，内壁光滑，流体阻力小，流量损失小。
产品使用方便，结构简单，可多次拆卸使用，管道系统更换维护方便。

It is applicable to the connection of medium and low pressure irrigation pipe network.
The product materials are PP raw materials, which are resistant to acid and alkali, and have long service life.
The design of internal structure is reasonable, with smooth inner wall, small fluid resistance and small flow loss.
The product is convenient to use and has simple structure. It can be disassembled and used many times, and the pipeline system can be replaced and maintained conveniently.

③ PVC管材及管件系列 PVC pipe and pipe fittings series



产品特点: Product advantages

- 适用于供排水等低压输水管网。
- 耐腐蚀性强: 可耐酸碱, 不受腐蚀性土壤和各种肥料, 药剂等酸碱液体的影响。
- 水流量大: 内壁光滑, 摩擦系数小, 流体流动阻力小, 因此水流量大。
- 安装使用方便: 重量轻、采用溶剂性胶粘剂接驳, 安装方便快捷, 降低施工费用和劳动强度, 适用于滴灌, 喷灌, 微灌等农田灌溉、城市园林绿化建设等节水工程。
- 使用寿命长: 使用特殊配方和工艺生产, 抗压、拉伸强度高、不易变色、耐老化。

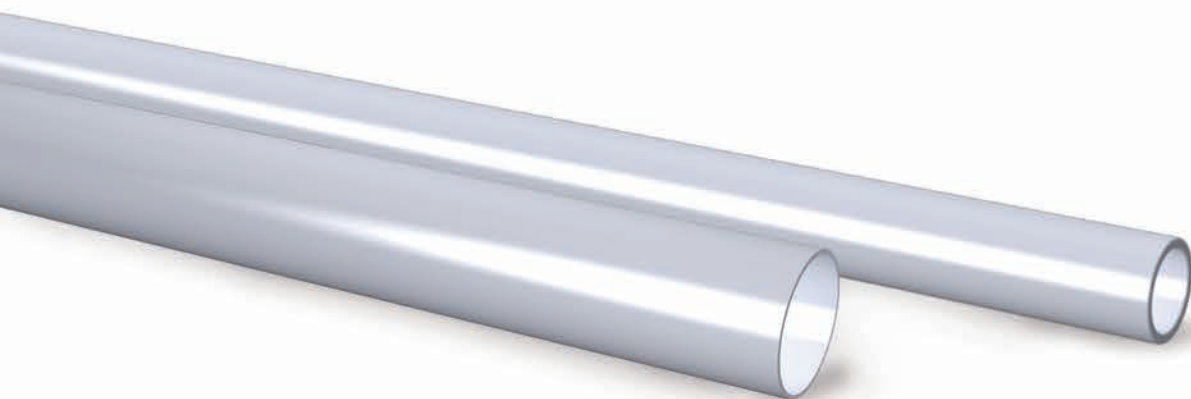
It is applicable to low pressure water transportation pipe network such as water supply and drainage.

It has strong corrosion resistance: it is resistant to acid and alkali, and does not influenced by corrosive soils and various fertilizers, pharmaceuticals and other acid-base liquids.

The water flow is big: the inner wall is smooth with small friction coefficient and small fluid flow resistance, so that the water flow is big.

Convenient installation and usage: it weighs light and adopts solvent adhesives to connect, so that the installation is convenient and quick and the construction fees and labor intensity is reduced. It is applicable to farmland irrigation such as drip irrigation, spraying irrigation and micro irrigation as well as water-saving engineering such as urban landscape greening construction.

It has long service life: produced with special formulas and technology, it has good compressive strength and tensile strength, is hard to change color and has good aging resistance.



PVC管件

PVC pipe



产品特点: Product advantages

- 圣大PVC管件采用溶剂性胶粘剂连接, 施工方便。
- 绝缘性, 阻燃性能好。
- 产品耐腐蚀, 耐酸碱, 防虫害使用寿命长。
- 内壁结构设计符合水力学设计, 内壁光滑, 阻力小。
- 管道承受压力满足工作压力要求, 施工方便快捷。

Shengda PVC pipe adopts solvent adhesives to connect, and the construction is convenient.

It has good insulativity and fire resistance.

The product is resistant to corrosion, acid and alkali, and is pest-proof and has long service life.

The design of inner wall structure is complied with hydraulics design. The inner wall is smooth with little resistance.

The pressure of the pipeline satisfies the working pressure requirement, and the construction is convenient and quick.

④ PE输水软带 PE water transportation soft hose



产品特点: Product advantages

- 适用于低压灌溉用水，常用于地表铺设，采用软带专用连接件和卡箍连接。
- 产品耐腐蚀，耐酸碱，原材料配方科学合理
- 软带安装铺设方便，可拆卸回收次年使用。
- 产品柔韧度高，耐压稳定，使用寿命长。

It is applicable to low pressure irrigation water. It is often used in ground surface laying, and it adopts special connectors and clamps of soft hose for connection.

The product is resistant to corrosion, acid and alkali, and the formula of raw materials is scientific and reasonable. The installation and laying of soft hose is convenient, and it can be disassembled and recycled for the next year. The product has high flexibility, stable pressure resistance and long service life.

软带管件

Soft hose pipe fittings



产品特点: Product advantages

- 产品安装方便，结构简单，可多次拆卸使用，管道系统更换维护方便。
- 产品结构设计合理，内壁光滑，流体阻力小，流量损失小。

The product is convenient to install and has simple structure. It can be disassembled and used many times, and the pipeline system can be replaced and maintained conveniently.

The design of product structure is reasonable, with smooth inner wall, small fluid resistance and small flow loss.



Terminal irrigation system 末端灌溉系统

1 滴灌系列产品 Terminal irrigation system

滴灌也叫滴水灌溉，是指通过安装在毛管上的滴头或滴灌带等滴水器，将水一滴一滴、均匀而又缓慢地滴入作物根区土壤中的灌溉方法。

水的利用率可达95%。同时可以结合施肥，提高肥效一倍以上。可适用于果树、蔬菜、经济作物以及温室大棚灌溉，在干旱缺水的地方也可用于大田作物灌溉。

滴灌优势：



产品应用：

适用于温室大棚、农田、果树、庭院、花园草坪、绿化的滴灌、微灌、喷灌、大田出水口、射频、变频等节水灌溉器材。

Trickle irrigation is also called drip irrigation. It is an irrigation method that drips water into the soil of crop root zone evenly and slowly drop by drop through water droppers, drip irrigation belts or other drippers installed on capillary tubes. The utilization rate of water can reach 95%. In the meantime, it can be combined with fertilization to double fertilizer efficiency. It can be used for fruit trees, vegetables, cash crops and greenhouse irrigation; and can also be used for field crop irrigation in dry and water-deficient areas.

Product application:

It is applicable to drip irrigation, micro irrigation, spraying irrigation, field outlet, radio frequency, frequency conversion and other water-saving irrigation equipment used in greenhouse, farmland, fruit trees, courtyard, garden lawn and greening.



迷宫式滴灌带

Labyrinth type drip irrigation hose

产品优点 Product advantages

- 薄壁式滴灌带，迷宫流道、滴孔管道一次成型，成本低性能优。
- 较宽的迷宫水流道，水流呈紊流态，且有多个进水口，具有超强的抗堵塞能力。
- 选用优质材料，拉伸性能优良，便于机械化铺设作业。
- 价格相对低廉，属于经济型产品，便于大面积推广。
- 滴头间距可根据用户要求调整。

It has thin-wall type drip irrigation hose. The labyrinth flow channel and drip-hole pipeline is formed in one time. The cost is low and the performance is good. It has relatively wide labyrinth water flow channel, and the flow is turbulent. It has several inlets with super anti-clogging ability. It chooses high-quality materials, has excellent tensile properties and is convenient for mechanized laying operation. Its price is relatively low, it belongs to economic products and is easy to promote in large

产品应用 Product application



内镶圆柱式滴灌管

Internal-embedded cylinder type drip irrigation pipe

产品优点 Product advantages

- 采用内镶迷宫式滴头，滴头与管内壁热熔形成封闭的流道，水流通过时成紊流状态，出水均匀度 $\geq 85\%$ 。
- 滴头生产选用高精密度模具和进口原材料，双出水孔设计，可减少土壤中微小颗粒、作物根需进入滴头；自洁性能及抗堵塞能力强。
- 滴灌管选用新型LDPE材料并加入抗老化剂和紫外线吸收剂，强度高、耐腐蚀、抗老化。
- 可节水50%，增产20%，省工50%，省肥50%以上。
- 0.5mm-1.0mm多种管壁厚度适应不同灌溉环境需要。

It adopts internal-embedded labyrinth type dropper. The dropper and the inner wall of the pipe form a closed channel through hot melt, and the flow is turbulent when passing through. The uniformity of the effluent equals to or is more than 85%. Dropper production uses high precision moulds and imported raw materials. The design of double water outlets can reduce the entry of micro-particles and crop roots in soil into droppers; it has strong self-cleaning performance and anti-clogging ability. The drip irrigation pipe uses new LDPE material and adds anti-aging agent and ultraviolet absorbent, and has high strength, corrosion resistance and aging resistance. It can save water by 50%, increase production by 20%, save labor by 50%, and save fertilizer by more than 50%. It has various pipe wall thickness of 0.5mm-1.0mm to applicable to requirement of different irrigation environment.

产品应用 Product application

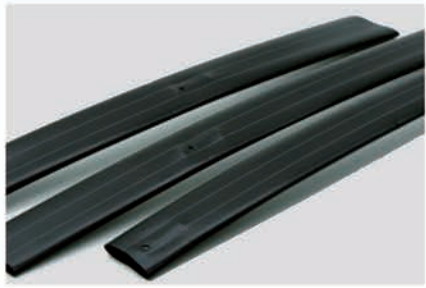
滴灌管主要用于温室大棚、大田、蔬菜、果树、葡萄、花卉等经济作物。

Drip irrigation pipes are mainly used in greenhouses, fields, vegetables, Economic crops such as fruit trees, grapes, and flowers.



● 圆柱式滴头





内镶贴片式滴灌带

产品优点 Product advantages

Internal-embedded patch type drip irrigation hose

- 纯原料生产，高精度连续稳定的流量；在不同地形中的应用压力范围较大的区间可保持流量的一致性；流量误差不超过7%；拥有防虹吸和高抗堵性能。
- 滴水均匀：滴头采用进口模具和进口原材料，科学合理的沟槽设计，保证滴头流量均匀稳定。
- 滴头不易堵塞：内镶贴片式滴灌带滴头有自过滤窗，抗堵性能好。
- 使用寿命长：原材料的合理配比及增加了抗老化添加剂，使产品抗老化的寿命大大延长。
- 滴头与管壁粘合紧密：滴头嵌在管道内，整体性好。
- 铺设距离长于内镶圆柱式滴灌管。
- 滴头间距可根据用户需要任意设置。

It is produced by pure raw materials and has continuous and stable flow with high precision; the consistency of flow can be maintained in intervals with relatively large-scale application pressure in different terrains; the flow error does not exceed 7%; it has anti-siphon and high anti-clogging performance.

Dripping evenly: the dropper adopts imported mould and raw materials. It ensures even and stable dropper flow with scientific and reasonable groove design.

The dropper is not easy to clog: The dropper of internal-embedded patch type drip irrigation hose has self-filtering window, which has good anti-clogging performance.

Long service life: with reasonable proportion of raw materials and aging resistance additives, it greatly prolongs the aging resistance life of products.

The dropper is closely bonded to the pipe wall; the dropper is embedded in the pipe and has good integrity.

The laying distance is longer than internal-embedded cylinder type drip irrigation pipe.

The space between water droppers can be set arbitrarily according to users' requirement.

产品应用 Product application

产品主要用于棉花、甘蔗、蔬菜、西红柿、黄瓜、草莓等。

Product application: the products are mainly used in cotton, sugarcane, vegetables, tomatoes, cucumbers, strawberries and so on.

压力补偿式滴灌带

产品优点 Product advantages

Pressure-compensated drip irrigation hose

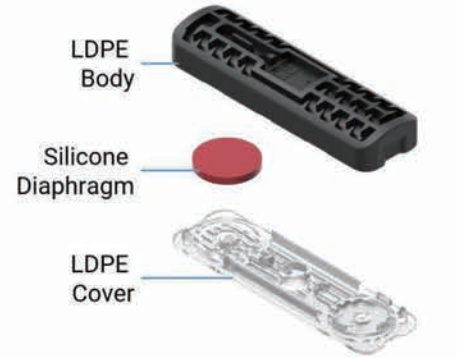
- 使用以色列最先进的扁平式轻型集成滴头。
- 纯原料挤出线生产。
- 卓越的防堵塞设计。
- 具有宽阔而准确的流道（迷宫型）。
- 特殊的迷宫设计，确保水的强烈湍流。
- 自动冲洗机制保证不堵塞以及不间断的滴头操作。
- 优异的发射均匀性 (CV) 3.57% A 级。
- 优异的流量系数 (x) 0.009 A 级。
- 滴头的超薄设计，减少了摩擦损失。
- 高抗紫外线。

1. Use Israel's most advanced flat light integrated dropper.
2. Pure raw material extrusion line production.
3. Excellent anti-clogging design.
4. Has a wide and accurate flow path (maze type).
5. Special labyrinth design to ensure strong turbulence of water.
6. The automatic flushing mechanism ensures no clogging and uninterrupted dropper operation.
7. Excellent emission uniformity (CV) 3.57% Class A.
8. Excellent flow coefficient (x) 0.009 A.
9. The ultra-thin design of the dropper reduces friction losses.
10. High UV resistance.

产品应用 Product application

常用于山地或丘陵地区种植的果树等作物灌溉。

It is often used for irrigation of crops such as fruit trees planted in mountainous or hilly areas.



滴箭

产品优点 Product advantages

Dripping arrow

- 迷宫长流道箭柄结构，膜片式稳流滴头，双重保障，确保出水均匀。
- 独特的导流圆盘，渗入式灌溉。
- 单箭、双箭、四箭等随意组给，施工方便。
- 工作压力：0.8-1.5bar，单箭流量为1.0L/h。

The double security of labyrinth long flow channel arrow handle structure and patch type flow-stabilizing dropper can ensure even effluent.

It has unique flow-guiding round plate and infiltration irrigation.

The single arrow, dual arrows and four arrows can be combined at will, which is convenient for construction.

Working pressure: 0.8-1.5bar, and the flow of single arrow is 1.0L/h.

产品应用 Product application



压力补偿滴头

产品优点 Product advantages

Pressure-compensated dropper

- 具有压力补偿功能，新开发的硬质弹簧膜片在7米-60米水头下出水均匀，克服了传统的压力补偿式滴头起始流量大，高压不出水的缺陷。
- 灌水均匀度高，灌水个体差异小。
- 具有可拆洗功能，是所有滴灌类产品中抗堵性最强的产品。
- 地形复杂适应能力强，铺设距离长。

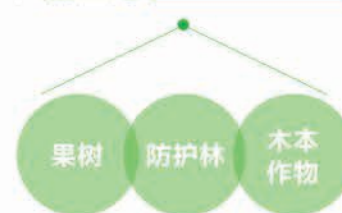
It has pressure-compensated function. The newly developed hard spring patch sends out water evenly under the water head of 7-60 meters, which overcomes the shortcomings of the traditional pressure-compensated droppers, such as large initial flow and high pressure without water.

Irrigation evenness is high and individual difference is small.

It has detachable washing function and is the product with the best anti-clogging performance in all drip irrigation products.

Its adaptability of complex terrains is strong and its laying distance is long.

产品应用 Product application



滴灌管、滴灌带管件

Drip irrigation pipe, drip irrigation hose pipe fittings

▲注：本公司管件型号齐全宣传册里不再一一列举！



稳流器

Flow stabilizer



② 微喷及微喷配件 Micro spraying and micro spraying accessories

微喷又称雾滴喷灌。近几年来，国内外在总结喷灌与滴灌的基础上，新近研制和发展起来的一种先进灌溉技术。微喷技术比喷灌更为省水，由于雾滴细小，其适应性比喷灌更大，农作物从苗期到成长收获期全过程都适用。它利用低压水泵和管道系统输水，在低压水的作用下，通过特别设计的微型雾化喷头，把水喷射到空中，并散成细小雾滴，洒在作物枝叶上或树冠下地面的一种灌水方式，简称为微喷。微喷既可增加土壤水分，又可提高空气湿度，起到调节小气候的作用。

Micro spraying is also called fog-drip spraying irrigation. It is an advanced irrigation technology newly researched and developed on the basis of summarizing spraying irrigation and drip irrigation at home and abroad in recent years. Micro-spraying technology is more water-saving than spraying irrigation, for the fog drips are tiny and its adaptability is greater than spraying irrigation. It is applicable to the whole process of crop from seedling stage to harvest stage. It uses a low-pressure pump and pipeline system to transport water. Under the action of low-pressure water, water is sprayed into the air through a specially designed micro-atomizing nozzle and dispersed into small fog drips, which are sprayed on the surface of the branches and leaves of crops or ground under the tree crowns. It is called micro spraying for short. Micro spraying can not only increase soil moisture, but also increase air humidity, and play a role in regulating microclimate.

微喷灌广泛应用于蔬菜、花卉、果园、药材种植场所，以及扦插育苗、饲养场所等区域的加湿降温。

Micro-spraying irrigation is widely used in planting sites of vegetables, flowers, orchards, medicinal materials, as well as humidification and cooling of cutting seedling, feeding places and other areas.



地插微喷

Ground-inserted micro spraying

- 流道按涡流原理设计
- 水流迅速防止堵塞
- 水滴细密分布均匀
- 启动压力小，流量稳定
- 锥形压入式接口，便于更换

产品优点 Product advantages

The flow channel is designed according to eddy current principle
The water flows quickly to prevent clogging
The water drips are tiny and evenly distributed
The starting pressure is small and the flow is stable



产品应用 Product application

草坪微灌, 果树喷灌, 庭院灌溉



倒挂微喷

Inverted micro spraying

产品优点 Product advantages

- 倒挂时有悬锤保持喷头垂直向下，防止喷头方向发生变化。
- 水流迅速，防止堵塞。
- 水滴细密，分布均匀。
- 配有止漏阀，避免系统关闭时产生滴水现象。
- 锥形压入式接口，便于更换。

When hanging upside down, there is a hanging hammer to keep the sprayer vertical downward and prevent the direction of the sprayer from changing. The water flows quickly to prevent clogging. The water drips are tiny and evenly distributed. It is equipped with a leak stop valve to avoid dripping when the system is open or closed.

防漏器：压力0.15Ma

主要作用：是在喷灌前或喷灌终止后，防止管道中的剩余水滴落到苗木及土壤中，确保喷灌在有计划地控制范围之内。

Leakage preventer: pressure 0.15Ma
Main function: prevent residual water in the channel from dripping into seedlings and soil to ensure that spraying irrigation is in a planned control range before spraying irrigation or after the end of spraying irrigation



● 防漏器



微喷灌带

Micro sprinkler belt

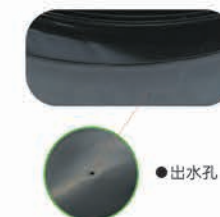
产品优点 Product advantages

- 微喷带又称多孔管、喷水带、喷灌带、微喷灌管，是在可压扁的塑料软管上采用机械或激光直接加工出水小孔，进行滴灌或微喷灌的节水灌溉设备。将每组3个出水孔、5个出水孔的微喷带直接铺设在地面，直射在空中的水流就能形成类似细雨的微喷灌效果。将每组单个出水孔或双出水孔的喷水带铺设在地膜下，水流在地膜的遮挡下就能形成滴灌效果。
- 纯原料生产，采用双向拉伸共挤技术，双层复合、抗老化、耐高温、抗冻裂，常温下不伸缩。工作压力：0.1Mpa

Micro spraying hose, also known as perforated pipes, spraying hoses, spraying irrigation hoses, and micro spraying irrigation hoses, is water-saving irrigation equipment for drip irrigation or micro spraying irrigation by using machinery or laser to directly process water holes on flattened plastic hoses. Directly laid micro spraying hoses with 3 outlets and 5 outlets in each group on the ground, and the micro spraying irrigation effect similar to the fine rain can be formed by the water flow shot straight into the air. Directly laid spraying hoses with 1 outlet or 2 outlets in each group under the mulching film, and the drip irrigation effect can be formed by the water flow under the cover of mulching film. raw materials. It adopts bidirectional tension co-extrusion technology, double-layer composite, anti-aging, high temperature resistance, and freeze cracking resistance, and does not shrink at room temperature. Working pressure: 0.1Mpa

产品应用 Product application

蔬菜 蘑菇 果园 苗圃



● 出水孔



倒挂微喷主要配件

Main accessories of inverted micro spraying



● 吊挂十字雾化

● 吊挂折射

● 吊挂旋转

● 旋转喷头

● 十字雾化

● 五孔十字雾化

微喷灌带主要配件

Main accessories of micro spraying irrigation hose



三通阀门

65型直接

50mm地埋式三通

二寸弯通

弯通阀门

四通阀门

两寸转45型三通

两寸转45型三通

二寸球阀三通

二寸球阀

二寸球阀三通

二寸球阀四通

三通

对向四通阀门

两寸转45型四通

两寸转45型四通

PVC-U 2寸硬管四通

40mm小球阀(65型)

③ 喷灌及喷灌配件 Sprinkler irrigation and accessories

喷灌喷头分为农业大田作物喷灌的摇臂喷头,园林绿化草坪喷灌的埋藏式升降喷头,农业温室大棚作物喷灌的雾化微喷头,工业防尘降温喷灌的喷头,高尔夫球场的草坪喷头。

Spraying irrigation sprayer is divided into rocker nozzle of agricultural field crops spraying irrigation, buried elevator sprayer of landscaping lawn spraying irrigation, atomization micro-sprayer of agricultural greenhouse crops spraying irrigation, sprayer of industrial dust-proof cooling spraying irrigation, lawn sprayer of golf course, etc.



喷头系列

Sprayer series

产品优点 Product advantages

● 简单移动式喷灌装置:

用汽或柴油机加泵、塑料软管、快速接头、装摇臂喷头的H型底座,一人即可操作。喷头可任意选择角度。将喷头作180度旋转,一次完成喷灌,不破坏作物,适应性强。

It is an H-shaped foundation with petrol or diesel engine pumps, plastic hoses, quick connectors and rocker nozzle, which can be operated by one person. The nozzle can choose any angle. The nozzle is rotated 180 degrees to complete spray irrigation at one time. It does not destroy crops and has strong adaptability.

喷头种类 Sprinkler type



产品应用 Product application



进口喷头

Imported sprayers



高强度工程塑料, 不锈钢回缩弹簧可在 25° -360° 任意调节喷洒角度双重摇臂, 旋转速度缓慢, 射程远可换喷嘴; 易于清洗。

适用范围: 住宅庭院公园的草坪灌溉、绿化。

It is made of high strength engineering plastics, and stainless steel retractable spring can adjust spraying angle arbitrarily from 25 to 360 degrees with double rocker arms. The rotation speed is slow, if the range is long, the sprayers can be changed; it is easy to clean. Scope of application: irrigation and greening of lawns in residential gardens and parks.



● 进口喷头 (以色列)



材料为工程塑料和不锈钢, 轻度高耐腐蚀, 喷嘴和内装过滤网拆换方便, 升降柱具有自清洗功能, 保证喷头可靠运行, 集全圆和可调角度喷洒于一体, 顶部角度可调节范围40° -360° 角度调节方便。

适用范围: 公园、校园街道、庭院草坪花卉的灌溉。

The material is engineering plastics and stainless steel with mild high corrosion resistance. The sprayer and inner filter is easy to disassemble replace. The lifting column has self-cleaning function to ensure the reliable operation of sprayer. It integrates full circle and adjustable angle spraying, and the adjustable range of top angle is 40 -360 degrees. The adjustment is convenient. Scope of application: Irrigation of lawns and flowers in parks, campus streets and courtyards.



● 进口喷头 (美国)

喷灌主要配件

Main accessories of spraying irrigation



● 喷灌专用带



● 出水口



● 全塑方便体



● 立杆和支架

④ 专用工具 Special tools

打孔器剪刀系列

Puncher and scissors series



●PE旁通打孔器



●PE小打孔器



●PE小打孔器



●软带打孔器



●PVC打孔器



●PE打孔器



●PE管件扳手



●软带小扳手



●PE打孔器



●PE打孔器



●软带打孔器



●软带打孔器





农业之心

智能水肥一体化
系统的领导者
Intelligent integrated
water System



山东圣大节水科技有限公司

SHANDONG SHENG DA WATER-SAVING IRRIGATION TECHNOLOGY CO., LTD

地址 (Add) 山东·寿光市晨鸣工业园文昌路中段 电话 (Tel) / 0536-5289990
邮编 (Cod) / 262700 传真 (Fax) / 0536-5786988 E-mail / sgdsjieshui@163.com

免费热线:
400-618-9919



*所有参数均经过仔细核对, 如有印刷错误, 本公司保留最终解释权。

*广告宣传品所列的文字、数据如有变更, 恕不另行通知, 产品图片与实物如有差别, 请以实物为准。

山东圣大节水科技有限公司